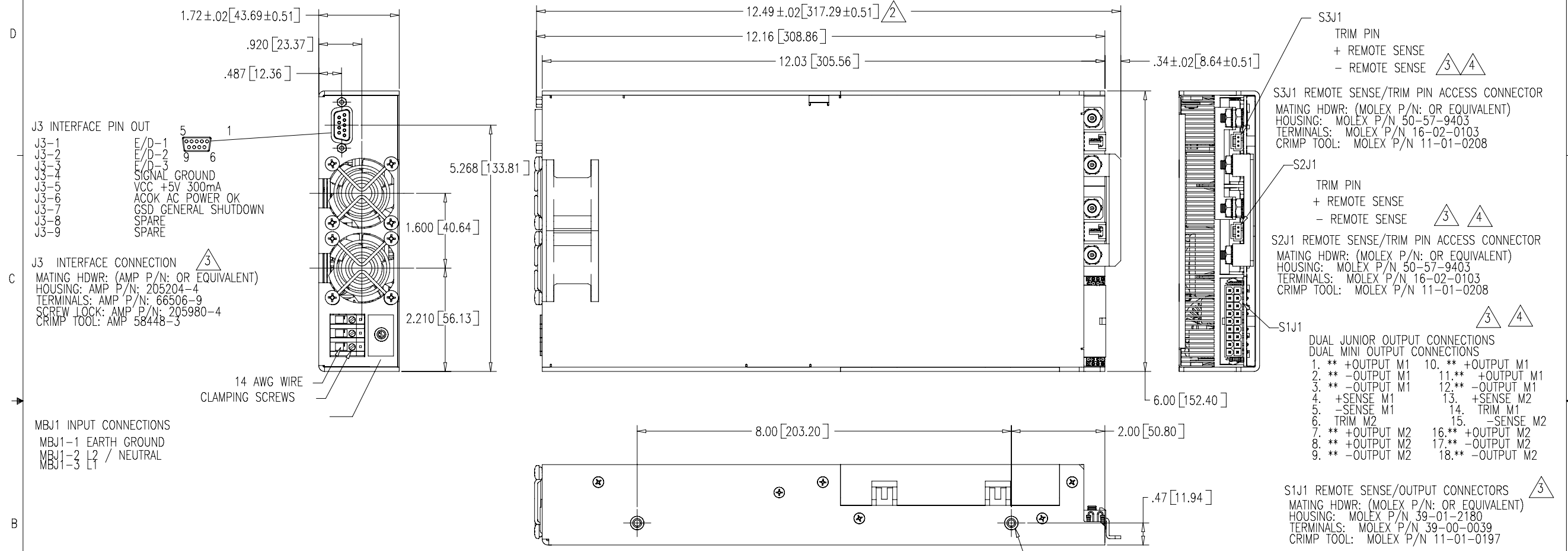


PROPRIETARY DATA:

This document and information contained may not be reproduced, used or disclosed without prior written permission of WESTCOR a division of VICOR Corporation.

REVISION HISTORY				
ECO	REV	DESCRIPTION	DATE	APPROVED
1342	A	BETA RELEASE	4/9/04	RME
1486	B	PRODUCTION RELEASE	07/14/05	LGK
---	B1	CHANGE CUSTOMER SIDE MTG HOLE QTY FR: 4 TO: 2	07/26/05	LGK
---	B2	ADDED CONNECTOR AND FAN DIMENSIONS TO REAR VIEW	07/27/05	LGK



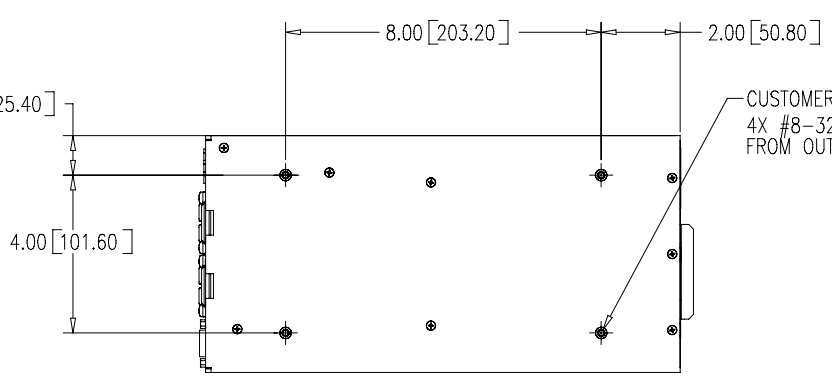
NOTES: UNLESS OTHERWISE SPECIFIED

1. INTERPRET DRAWING PER ANSI Y14.5-1994.

2 WITH OPTIONAL BUSBAR.

3 A COMPLETE SET OF MATING CONNECTORS CAN BE PURCHASED FROM WESTCOR BY SPECIFYING CONNECTOR KIT P/N: 19-130047 A KIT CONTAINING 40 EA OF THE HI POWER 12 AMP 16 AWG CRIMP PINS 1S P/N: 19-130050.

4 REF DESIGNATION LEGEND
 MB = MOTHER BOARD
 S1 = (SLOT 1) DAUGHTERBOARD MODULES E/D 1.
 S2 = (SLOT 2) DAUGHTERBOARD MODULES E/D 2.
 S3 = (SLOT 3) DAUGHTERBOARD MODULES E/D 3.



BOTTOM VIEW
 SCALE: 1:2

NOTE: DETAILED DESIGN GUIDELINES ARE AVAILABLE @ www.vicorpower.com

ITEM NO.	PART OR IDENTIFYING NO.	NOMENCLATURE OR DESCRIPTION	MATERIAL SPECIFICATION	QTY	RECD.
UNLESS OTHERWISE SPECIFIED DIMENSIONS ARE IN INCHES TOLERANCES ARE: FRACTIONS DECIMALS ANGLES ± 1/32 ± .005 ± .005 ± 1/2					
THIRD ANGLE PROJECTION			APPROVALS		
MATERIAL			DATE		
FINISH			DATE		
NEXT ASSY USED ON			APPROVED		
APPLICATION			DO NOT SCALE DRAWING		
WESTCOR a division of VICOR Corp.			OUTLINE		
PFC MINI VE 1/RU			SIZE DWG. NO. 08-130180-01		
SCALE: 1:1			FILENAME: 08-130180-01		
SHEET 1 OF 1			REV B2		